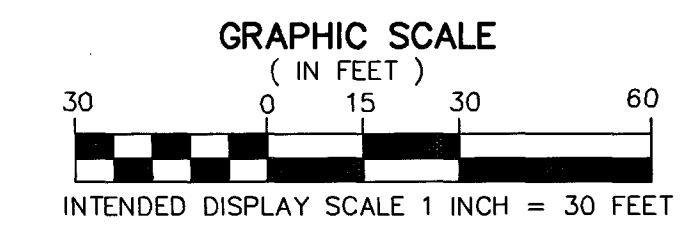


# AUTUMN RIDGE APARTMENTS

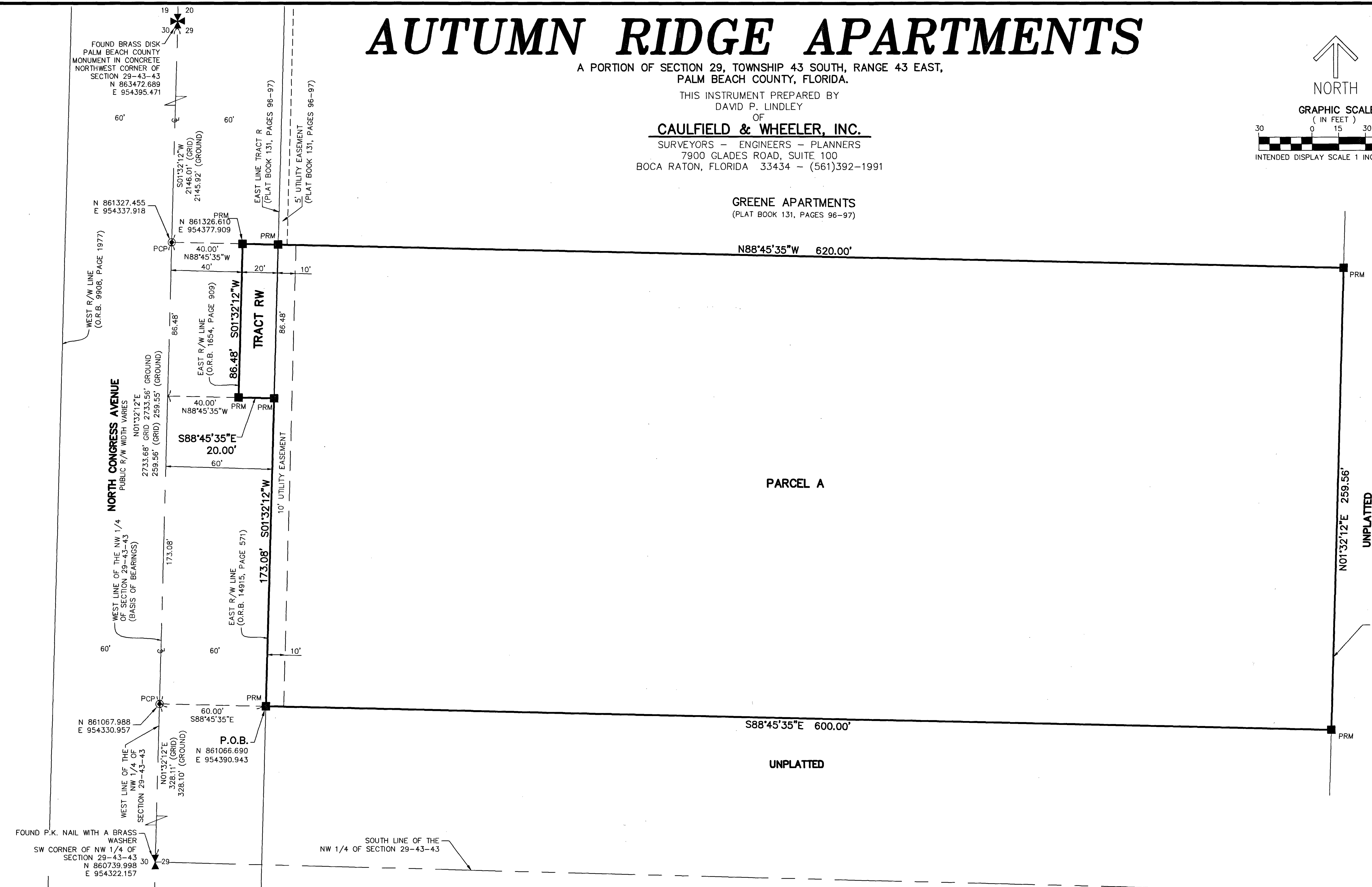
A PORTION OF SECTION 29, TOWNSHIP 43 SOUTH, RANGE 43 EAST,  
PALM BEACH COUNTY, FLORIDA.

THIS INSTRUMENT PREPARED BY  
DAVID P. LINDLEY  
OF  
**CAULFIELD & WHEELER, INC.**  
SURVEYORS - ENGINEERS - PLANNERS  
7900 GLADES ROAD, SUITE 100  
BOCA RATON, FLORIDA 33434 - (561)392-1991



# 34

SHEET 2 OF 2



### LEGEND/ABBREVIATIONS

- P.O.C. - POINT OF COMMENCEMENT
- P.O.B. - POINT OF BEGINNING
- ⊙ - CENTERLINE
- LB - LICENSED BUSINESS
- N - NORTHING WHEN USED WITH COORDINATES
- E - EASTING WHEN USED WITH COORDINATES
- O.R.B. - OFFICIAL RECORD BOOK
- P.B. - PLAT BOOK
- UE - UTILITY EASEMENT
- R/W - RIGHT-OF-WAY
- 29-43-43 - SECTION 29, TOWNSHIP 43 SOUTH, RANGE 43 EAST
- ✱ - 1/4 SECTION CORNER
- ✱ - SECTION CORNER
- ⊙ PCP - SET PERMANENT CONTROL POINT NAIL AND DISK STAMPED "C&W LB 3591"
- SIRC - DENOTES SET 5/8" IRON ROD WITH CAP STAMPED "C&W LB 3591"
- PRM - INDICATES SET 4" x 4" x 24" CONCRETE PERMANENT REFERENCE MONUMENT WITH ALUMINUM DISK STAMPED "PRM LB 3591" UNLESS OTHERWISE NOTED

### NOTES

**COORDINATES, BEARINGS AND DISTANCES**  
 COORDINATES SHOWN ARE GRID  
 DATUM = NAD 83 (90 ADJUSTMENT)  
 ZONE = FLORIDA EAST  
 LINEAR UNIT = US SURVEY FEET  
 COORDINATE SYSTEM 1983 STATE PLANE  
 TRANSVERSE MERCATOR PROJECTION  
 ALL DISTANCES ARE GROUND, UNLESS STATED OTHERWISE  
 SCALE FACTOR = 1.0000431  
 GROUND DISTANCE X SCALE FACTOR = GRID DISTANCE  
 BEARINGS AS SHOWN HEREON ARE GRID DATUM,  
 NAD 83 (90 ADJUSTMENT), FLORIDA EAST ZONE.

P.O.C.  
 FOUND BRASS DISK  
 PALM BEACH COUNTY  
 MONUMENT IN CONCRETE  
 SOUTHWEST CORNER OF  
 SECTION 29-43-43  
 N 858007.178  
 E 954248.520